

MTA Studio® Range

Customizable Dashboards, Displays and Control Units

São Paulo, Brazil, June 5, 2018. MTA, a multinational company, headquartered in Italy, known for the development and production of electromechanical and electronic products sold to major vehicle manufacturers, is showcasing during the M&T Expo its full range of dashboards, displays and control units developed with MTA Studio®, a proprietary software tool that allows the customer to tailor the product to the needs of the vehicle it will be installed on, from small mowers to orchard tractors, large tractors, and harvesting machines, thanks to its exceptional configurability.

Today, the MTA range of electronic off-the-shelf products specifically developed for the off-highway world includes 6 different dashboards, 4 displays and 2 control units, that can be quickly and easily customized by OEMs thanks to MTA Studio.

All dashboards - **Spot, Quik, Quik Plus, Revo, Revo Plus** and **Smart** - and displays - **Zip, Giotto K, Giotto** and **Leonardo** - feature very similar hardware and software architectures, elegant design and modern lines, but are different in shapes and sizes, number of LEDs, inputs and outputs, and screen types. These range from LCDs (segment or dot matrix) to TFTs (3.5" up to 4.3"), coupled with analog needle indicators, up to full color 8" or 12" TFTs, enabling the operator to constantly monitor the key parameters of the machines and any equipment they control.

The MTA Studio® range has been developed with special attention to safety details, such as anti-reflection and anti-fingerprint treatments, thus ensuring perfect visibility even in the harshest environments.

Always taking into account the presence of dirt, mud and water typical of the off-highway applications, all products consist of state-of-the-art components, with advanced materials that, together with the above treatments, guarantee high resistance to temperatures and vibrations, as well as an IP66 or IP67 degree of protection. It is noteworthy that 3 displays of the range can be configured not only with MTA Studio®, but also with an Android environment for more powerful graphics.

The two **Dyna** and **Actua** control units, designed to drive different types of actuators, are also developed using the MTA Studio® software tool. They can be supplied with 12 Vdc and 24 Vdc and differ from each other by the number of inputs and outputs and the processor computing power (higher for Actua). The compact and robust design and IP67 protection make them perfect for off-highway applications.

MTA S.p.A.

Sede: Italy | 26845 Codogno (LO) | V.le dell'Industria, 12 | T. +39 0377 4181 F. +39 0377 418493

Unità locale: 42047 Rolo (RE) | Via dell'Ecologia, 3 | T. +39 0522 1827201 F. +39 0522 1827266

Capitale Sociale € 8.000.000 int. vers. | Registro delle Imprese, C.F. e P. IVA IT00828540153 | REA 869922 | N. Meccanografico LO 000520
infoitaly@mta.it – www.mta.it



With the range of dashboards and control units developed with MTA Studio®, MTA is reconfirmed as a leading company in the vehicle electronics field, able to satisfy the OEMs with both custom-made products for large production series, and off-the-shelf, that can then be customised, for niche applications.

MTA at M&T Expo, Stand 1364

PICTURES

The MTA Studio dashboard range:

Spot



Smart



Quik



Quik Plus



Revo



Revo Plus



MTA S.p.A.

Sede: Italy | 26845 Codogno (LO) | V.le dell'Industria, 12 | T. +39 0377 4181 F. +39 0377 418493

Unità locale: 42047 Rolo (RE) | Via dell'Ecologia, 3 | T. +39 0522 1827201 F. +39 0522 1827266

Capitale Sociale € 8.000.000 int. vers. | Registro delle Imprese, C.F. e P. IVA IT00828540153 | REA 869922 | N. Meccanografico LO 000520
infoitaly@mta.it – www.mta.it

The MTA Studio display range:

Zip



Giotto K



Giotto



Leonardo

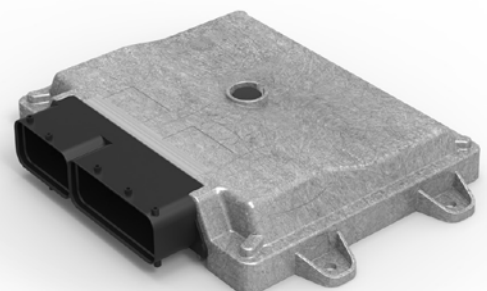


The MTA Studio ECU range:

Dyna



Actua



MTA S.p.A.

Sede: Italy | 26845 Codogno (LO) | V.le dell'Industria, 12 | T. +39 0377 4181 F. +39 0377 418493

Unità locale: 42047 Rolo (RE) | Via dell'Ecologia, 3 | T. +39 0522 1827201 F. +39 0522 1827266

Capitale Sociale € 8.000.000 int. vers. | Registro delle Imprese, C.F. e P. IVA IT00828540153 | REA 869922 | N. Meccanografico LO 000520
infoitaly@mta.it – www.mta.it



MTA BRASIL

MTA Brasil, founded in 1995 in the industrial area of Arujá near São Paulo, is a strategic location supplying the important Mercosur market.

Constantly expanded to respond to producers who have established production facilities in the area, over the years MTA Brasil has aligned with the standards that distinguish the other sites of the company. Now it is certified IATF 16949, after having obtained the ISO 14001 environmental certification.

To support the production increase of these last years, the site has been equipped with a molding department with presses having a tonnage range from 80 to 300 tons.

MTA S.p.A. is a global leader in the development and production of a wide range of electromechanical and electronic products developed internally for the primary manufacturers of cars, motorcycles, tractors, and heavy vehicles.

Founded in 1954, MTA has two production sites in Italy (Codogno and Rolo), 8 foreign sites, sales of about €198 million, and 1,330 employees.

TO LEARN MORE

-  Website www.mta.it
-  LinkedIn [mta-s-p-a-](https://www.linkedin.com/company/mta-s-p-a/)
-  Facebook [MTA.GROUP](https://www.facebook.com/MTA.GROUP)
-  YouTube [MTAItaly](https://www.youtube.com/MTAItaly)

COM&MEDIA –MTA's Press Office

Barbara Maggi – Silvia Casazza

T. +39 02 45409562 [uffstampa@comemedia.i](mailto:uffstampa@comemedia.it)

MTA S.p.A.

Sede: Italy | 26845 Codogno (LO) | V.le dell'Industria, 12 | T. +39 0377 4181 F. +39 0377 418493

Unità locale: 42047 Rolo (RE) | Via dell'Ecologia, 3 | T. +39 0522 1827201 F. +39 0522 1827266

Capitale Sociale € 8.000.000 int. vers. | Registro delle Imprese, C.F. e P. IVA IT00828540153 | REA 869922 | N. Meccanografico LO 000520
infoitaly@mta.it – www.mta.it
